

PALACE SANDS

PANAMA CITY BEACH'S FIRST
NEW GULF-FRONT
CONDOMINIUM
IN OVER 10 YEARS!



Palace Sands

6161 S Thomas Drive
Panama City Beach, FL 32408

24-Story High-Rise Condominium
~320 Beach Frontage



New Luxury Condominiums

Palace Sands

6161 S Thomas Drive, Panama City Beach, FL 32408



Welcome to Palace Sands, Panama City Beach's first Gulf front condominium development in 10 years! Once completed, Palace Sands will be a 25-story high-rise tower on Thomas Drive with ~320 feet of beach frontage.

The tower design includes nineteen standard residential floors, each offering 2-bedroom and 3-bedroom units. The top floor will feature stunning two-story penthouse units, each with a 22-foot tall atrium, 5-bedrooms and 5-bathrooms. Two separate villas will be on the fourth floor, adjacent to the indoor swimming pool.

The lower three floors will include a two-level parking garage and a level dedicated to recreational and commercial activities.

Slated to be complete in 2021, reserve your unit today and lock in pre-construction pricing!



Nathan Abbott
850.812.3251

Info@NathanAbbottTeam.com

www.PalaceSandsFL.com

[Emerald Coast's Ultimate Search Website:](http://www.FindDestinRealEstate.com)

www.FindDestinRealEstate.com





Luxurious Coastal Amenities

Palace Sands

6161 S Thomas Drive, Panama City Beach, FL 32408

Amenities

- Two Gulf front outdoor pools
- Indoor pool and two spas
- Huge arcade room
- Manatee deck on third floor with bar and grill
- Beach cabanas
- Gazebo
- Fitness center and walking area
- Outdoor shower
- 2-level parking
- Dedicated parking spaces
- Gated community
- Four air conditioned elevators
- Two generator backups for building





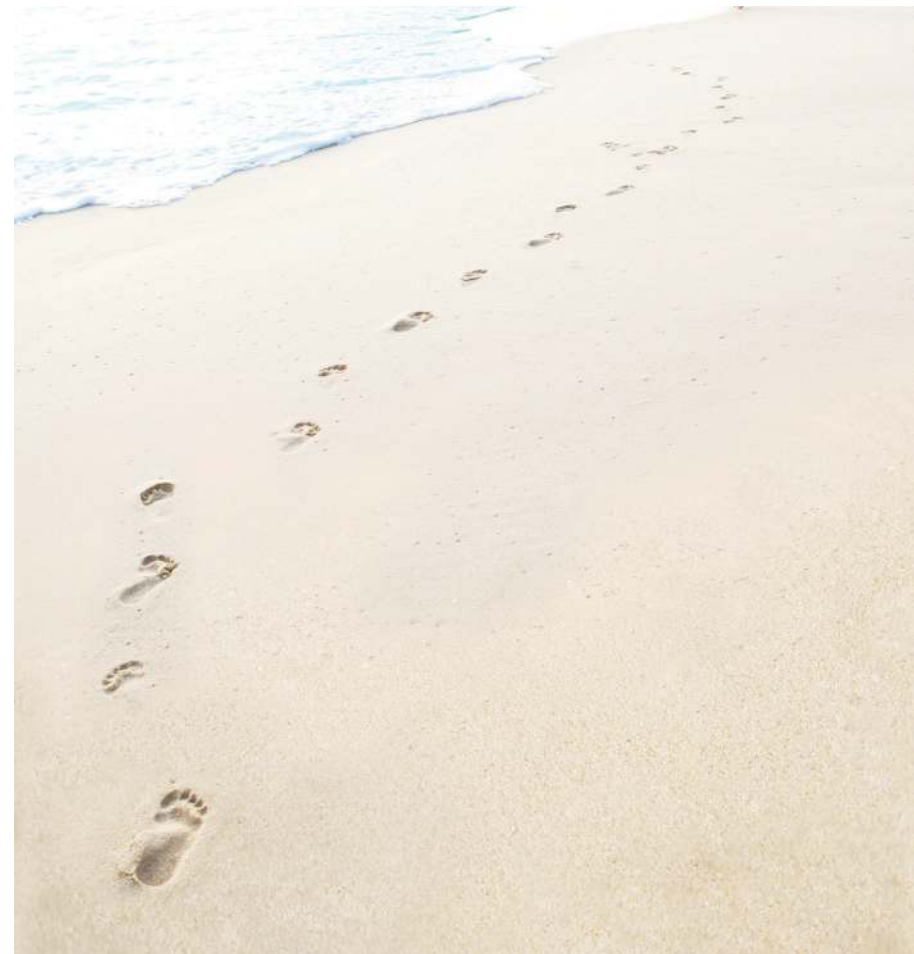
Breathtaking Interior Features

Palace Sands

6161 S Thomas Drive, Panama City Beach, FL 32408

Interior Features

- Open living, kitchen and dining
- Split bedroom floor plan
- 9' ceilings throughout
- Upscale kitchen with breakfast bar
- Gulf front master bedroom
- Luxurious master bath with double vanities
- Tankless Rinnai water heaters
- Bunk alcove
- Interior storage unit - perfect for beach gear
- Expansive balcony with natural gas grill hook-up



Available Floor Plans

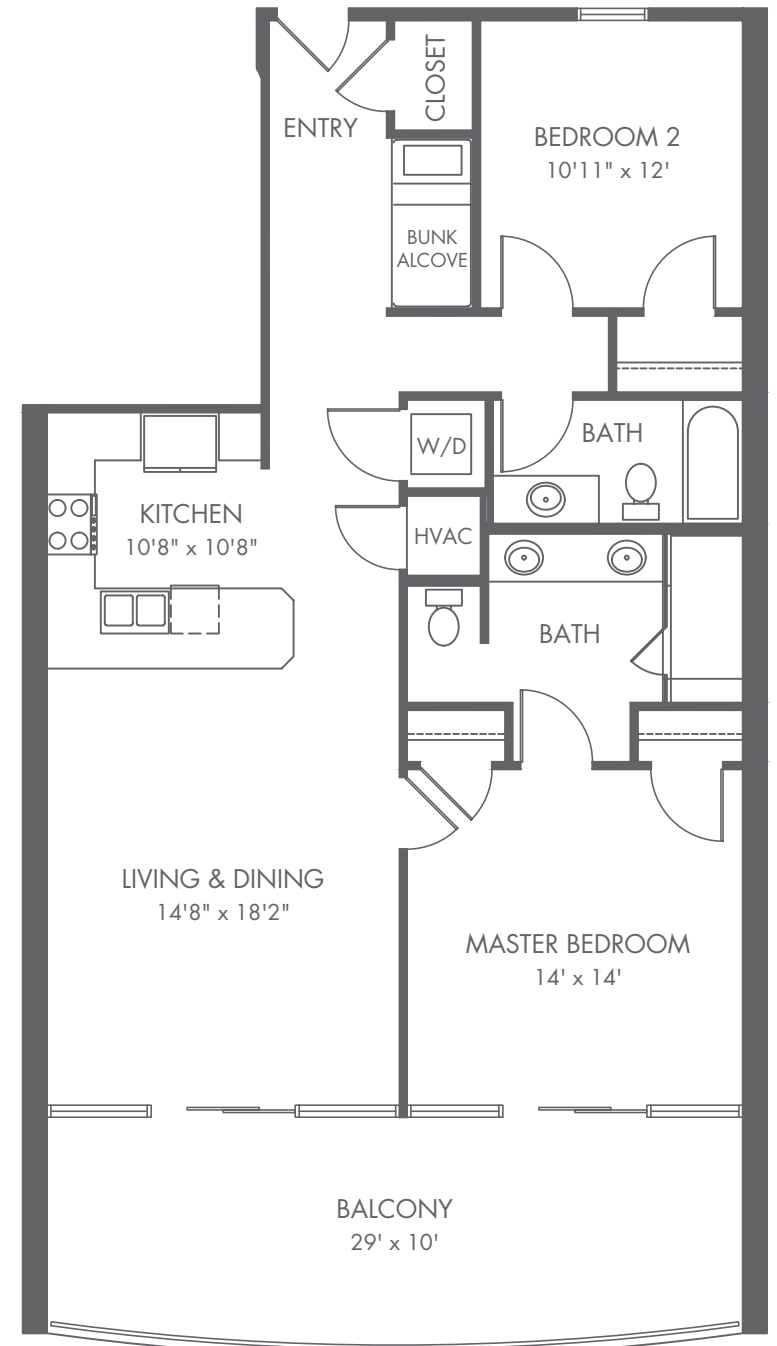
Palace Sands

6161 S Thomas Drive, Panama City Beach, FL 32408

Sand Dollar

- 2 bedrooms
- 2 bathrooms
- 1,220 sq ft
- Bunk alcove
- 290 sq ft Gulf front balcony
- Master suite with two closets and direct balcony access; en-suite bath features double vanities and large walk-in shower
- Kitchen with breakfast bar

Starting at \$570,000



Available Floor Plans

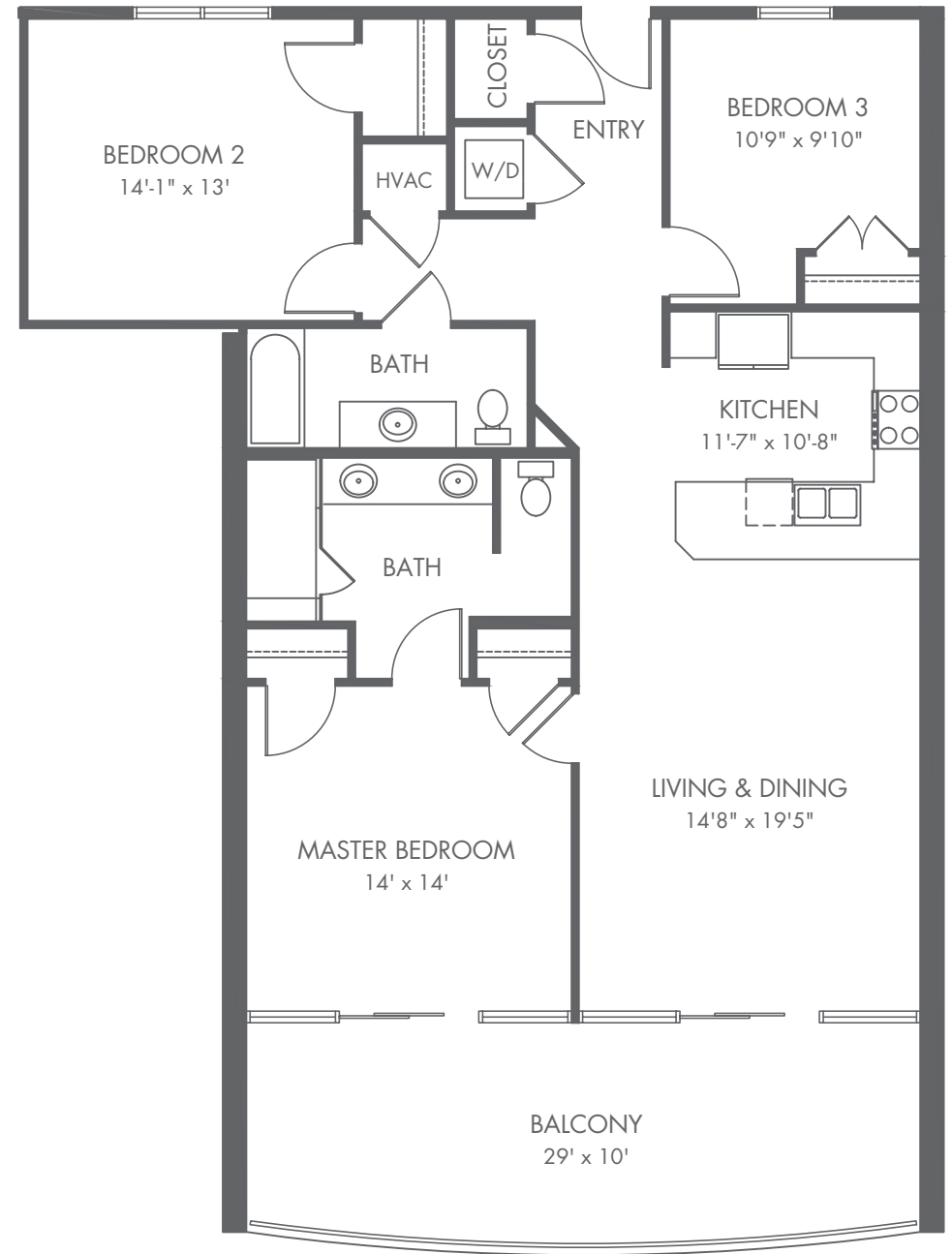
Palace Sands

6161 S Thomas Drive, Panama City Beach, FL 32408

Sand Dune

- 3 bedrooms
- 2 bathrooms
- 1,440 sq ft
- 290 sq ft Gulf front balcony
- Master suite with two closets and direct balcony access; en-suite bath features double vanities and large walk-in shower
- Kitchen with breakfast bar

Starting at \$670,000



Available Floor Plans

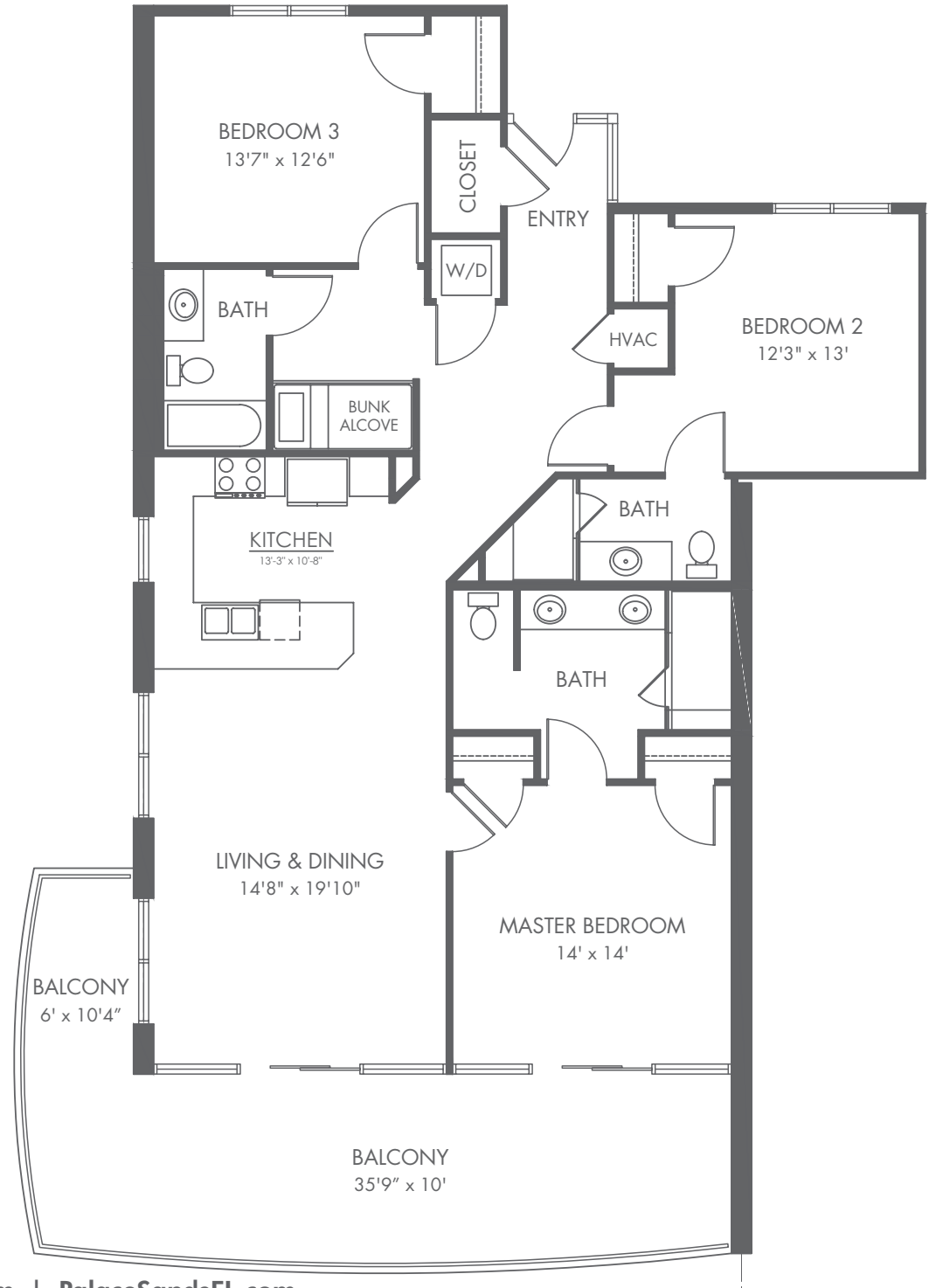
Palace Sands

6161 S Thomas Drive, Panama City Beach, FL 32408

Sand Castle

- 3 bedrooms
- 2 bathrooms
- Bunk alcove
- 1,646 sq ft
- 419 sq ft wrap-around Gulf front balcony
- Master suite with two closets and direct balcony access; en-suite bath features double vanities and large walk-in shower
- Kitchen with breakfast bar

Starting at \$770,000



Available Floor Plans

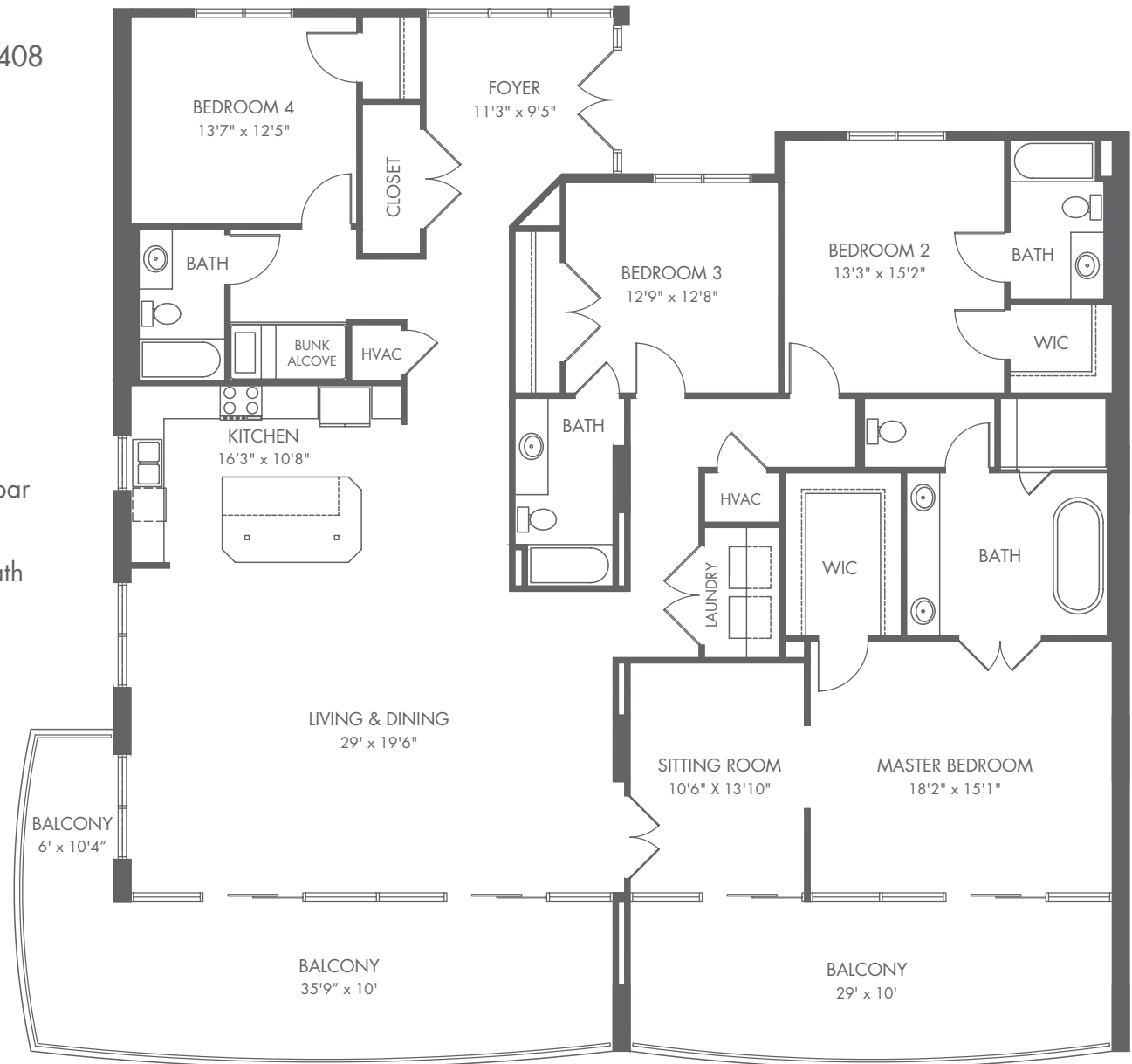
Palace Sands

6161 S Thomas Drive, Panama City Beach, FL 32408

Manatee Villa

- 4 bedrooms
- 4 bathrooms
- Bunk alcove
- 2,972 sq ft
- 419 sq ft wrap-around Gulf front balcony
- Large kitchen with center island and breakfast bar
- Master suite with sitting room, two closets and private 290 sq ft Gulf front balcony; en-suite bath features double vanities, separate soaking tub and large walk-in shower

Starting at \$1,800,000



Available Floor Plans

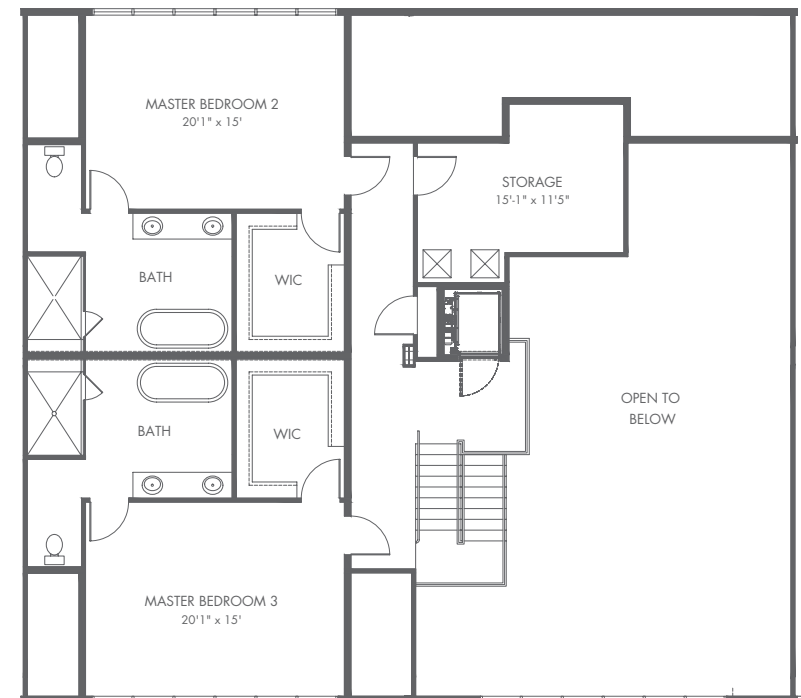
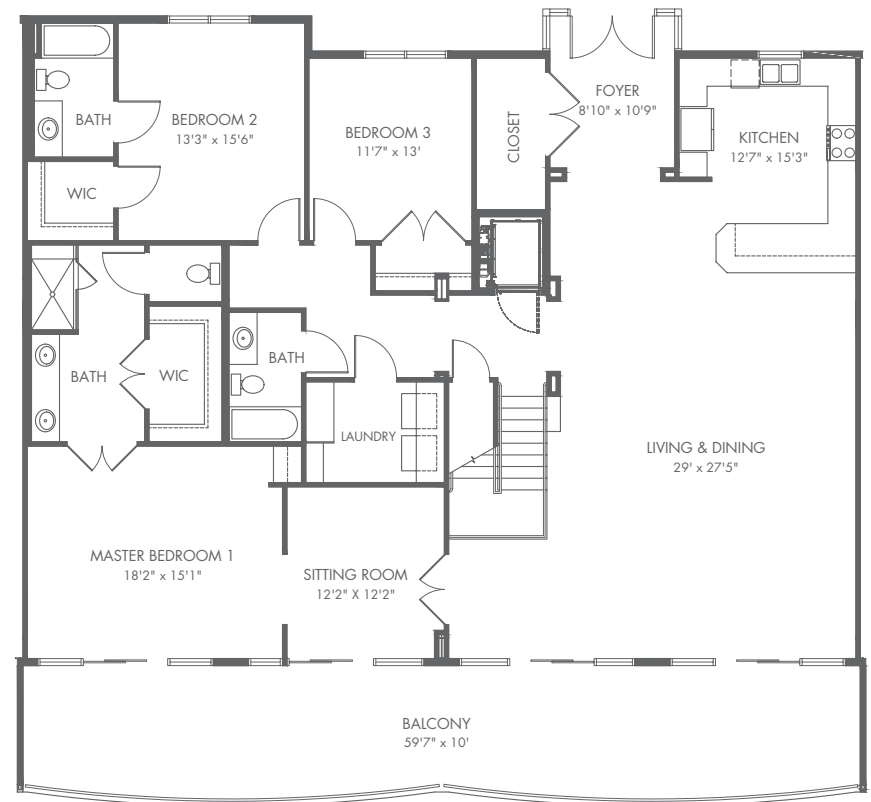
Palace Sands

6161 S Thomas Drive, Panama City Beach, FL 32408

Penthouse E

- 5 bedrooms
- 5 bathrooms
- 4,421 sq ft
- 595 sq ft Gulf front balcony
- 296 sq ft covered Gulf front porch
- Vaulted living, dining and kitchen open to 2nd level
- Kitchen with breakfast bar
- 1st level master suite with sitting room, oversized walk-in closet and direct balcony access; en-suite bath features double vanities and large walk-in shower
- Two 2nd level master suites, each with a large walk-in closet, double vanities, soaking tub, and separate walk-in shower

Starting at \$2,600,000



PalaceSandsFL.com
850.812.3251 | Info@NathanAbbottTeam.com

Available Floor Plans

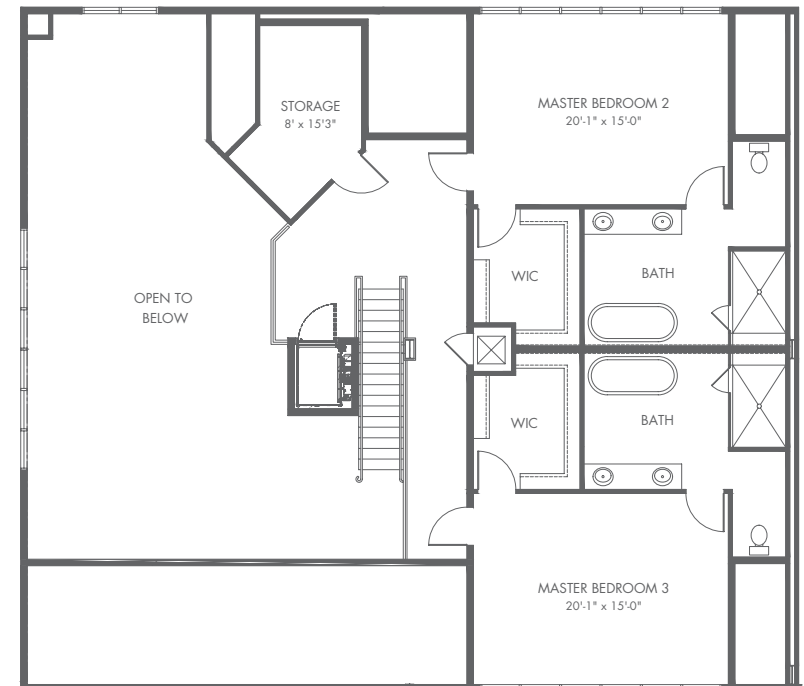
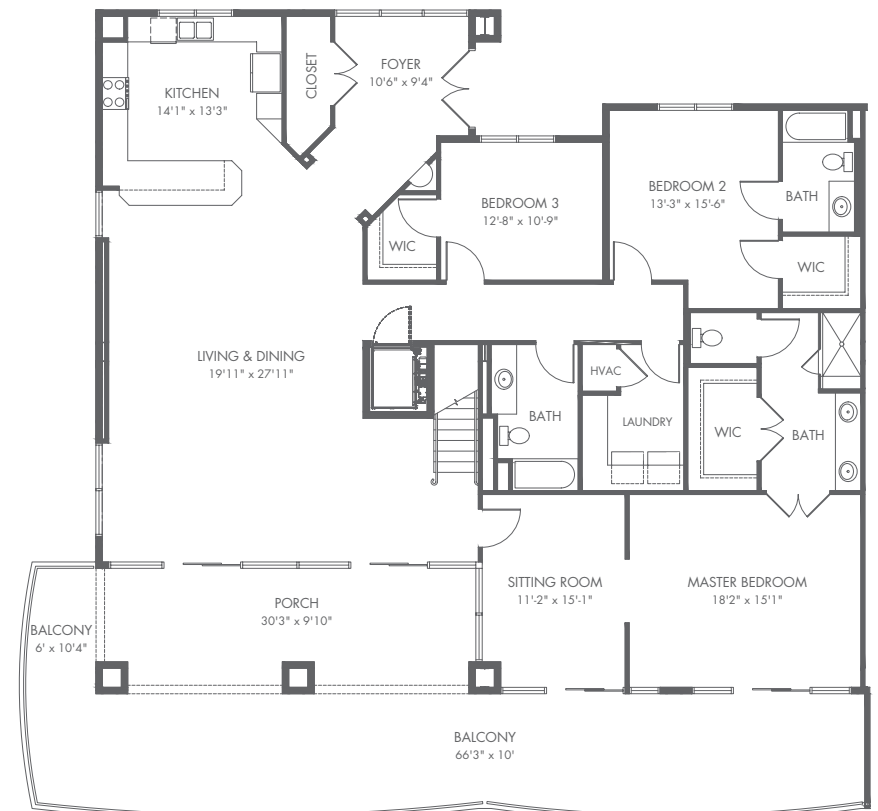
Palace Sands

6161 S Thomas Drive, Panama City Beach, FL 32408

Penthouse D

- 5 bedrooms
- 5 bathrooms
- 4,387 sq ft
- 724 sq ft wrap-around Gulf front balcony
- 296 sq ft covered Gulf front porch
- Vaulted living, dining and kitchen open to 2nd level
- Kitchen with breakfast bar
- 1st level master suite with sitting room, oversized walk-in closet and direct balcony access; en-suite bath features double vanities and large walk-in shower
- Two 2nd level master suites, each with a large walk-in closet, double vanities, soaking tub, and separate walk-in shower

Starting at \$2,750,000



PalaceSandsFL.com
850.812.3251 | Info@NathanAbbottTeam.com

Nathan Abbott Team

Luxury Real Estate Professionals From Florida's Emerald Gulf Coast

We Are Native Experts Selling Paradise

The Nathan Abbott Team specializes in selling **luxury properties** along Florida's Emerald Coast and continues to be top producers in Northwest Florida. Our goal is to deliver the **ultimate real estate experience** with impeccable service and expert market **knowledge**, while building lifelong **relationships** with our customers.

- \$534,000,000 in closed production since 2001
- Ranked in the top 0.5% of production for Northwest Florida 2012-2018
- Top Sales for ResortQuest Real Estate of Florida 6 years in a row
- Certified Luxury Home Marketing Specialist and Million Dollar Guild

Our prior pre-construction involvement includes Palazzo, Azure and Harbor Lights. We are also the dedicated sales team for multiple new construction communities including Hidden Palms and Paradise Cove.

We enjoy finding people wonderful investments, building meaningful relationships with our customers, meeting new friends and having great business partners. With our industry contacts, native knowledge of the area and diligent work ethic, we provide our customers with an enjoyable and rewarding real estate experience.

Nathan Abbott is now a Certified Luxury Home Marketing Specialist with the Institute of Luxury Home Marketing. Members of The Institute who hold the CLHMS designation have documented performance in the TOP 10% of their markets, and have successfully demonstrated their expertise in the luxury home and estate market, further assuring you that Nathan has the experience to market and sell your luxury property.

The Nathan Abbott Team serves the Emerald Coast of Florida real estate markets including Okaloosa Island, Niceville, Destin, Miramar Beach, SanDestin, Santa Rosa Beach, Scenic 30A, and Panama City Beach.



PalaceSandsFL.com
850.812.3251 | Info@NathanAbbottTeam.com